

SAMPLE BALLOT

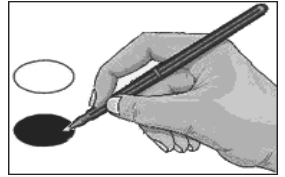
Sample Ballot
Davidson County, North Carolina
November 8, 2016

G004



BALLOT MARKING INSTRUCTIONS:

- A. With the marking device provided or a black ball point pen, completely fill in the oval to the left of each candidate or selection of your choice as shown.
 B. Where authorized, you may write in a candidate by filling in the oval and writing the name on the Write-in line.
 C. If you tear, deface or wrongly mark this ballot, return it to request a replacement.



PARTISAN OFFICES		
	NC Attorney General (You may vote for ONE)	NC Treasurer (You may vote for ONE)
President and Vice President of the United States (You may vote for ONE)	<input type="radio"/> Buck Newton Republican <input type="radio"/> Josh Stein Democrat	<input type="radio"/> Dale R. Folwell Republican <input type="radio"/> Dan Blue III Democrat
<input type="radio"/> Donald J. Trump Michael R. Pence Republican <input type="radio"/> Hillary Clinton Tim Kaine Democrat <input type="radio"/> Gary Johnson William Weld Libertarian <input type="radio"/> _____ Write-in	NC Auditor (You may vote for ONE)	NC State Senate District 33 (You may vote for ONE)
	<input type="radio"/> Chuck Stuber Republican <input type="radio"/> Beth A. Wood Democrat	<input type="radio"/> Cathy Dunn Republican <input type="radio"/> Jim Beall Graham Democrat
US Senate (You may vote for ONE)	NC Commissioner of Agriculture (You may vote for ONE)	NC House of Representatives District 80 (You may vote for ONE)
<input type="radio"/> Richard Burr Republican <input type="radio"/> Deborah K. Ross Democrat <input type="radio"/> Sean Haugh Libertarian	<input type="radio"/> Steve Troxler Republican <input type="radio"/> Walter Smith Democrat	<input type="radio"/> Sam Watford Republican
	NC Commissioner of Insurance (You may vote for ONE)	Board of Commissioners (You may vote for THREE)
	<input type="radio"/> Mike Causey Republican <input type="radio"/> Wayne Goodwin Democrat	<input type="radio"/> Zak Crotts Republican <input type="radio"/> Steve Jarvis Republican <input type="radio"/> Fred D. McClure Republican
US House of Representatives District 13 (You may vote for ONE)	NC Commissioner of Labor (You may vote for ONE)	NONPARTISAN OFFICES
<input type="radio"/> Ted Budd Republican <input type="radio"/> Bruce Davis Democrat	<input type="radio"/> Cherie Berry Republican <input type="radio"/> Charles Meeker Democrat <input type="radio"/> _____ Write-in	NC Supreme Court Associate Justice (You may vote for ONE)
NC Governor (You may vote for ONE)	NC Secretary of State (You may vote for ONE)	<input type="radio"/> Michael R. (Mike) Morgan <input type="radio"/> Robert H. (Bob) Edmunds
<input type="radio"/> Pat McCrory Republican <input type="radio"/> Roy Cooper Democrat <input type="radio"/> Lon Cecil Libertarian	<input type="radio"/> Michael LaPaglia Republican <input type="radio"/> Elaine Marshall Democrat	NC Court of Appeals Judge (You may vote for ONE)
NC Lieutenant Governor (You may vote for ONE)	NC Superintendent of Public Instruction (You may vote for ONE)	<input type="radio"/> Phil Berger, Jr. Republican <input type="radio"/> Linda Stephens Democrat
<input type="radio"/> Dan Forest Republican <input type="radio"/> Linda Coleman Democrat <input type="radio"/> Jacki Cole Libertarian	<input type="radio"/> Mark Johnson Republican <input type="radio"/> June Atkinson Democrat	Continue voting next side

-- VOTE BOTH SIDES --

D		E		F	
NC Court of Appeals Judge (You may vote for ONE)		Soil and Water Conservation District Supervisor (You may vote for ONE)		Countywide Mixed Beverage Election	
<input type="radio"/> Hunter Murphy Republican <input type="radio"/> Margaret Eagles Democrat <input type="radio"/> Donald Ray Buie Unaffiliated		<input type="radio"/> Kevin Briggs <input type="radio"/> Dennis Clarence Loflin <input type="radio"/> _____ Write-in		To permit the sale of mixed beverages in hotels, restaurants, private clubs, community theatres, and convention centers.	
NC Court of Appeals Judge (You may vote for ONE)		Handy Sanitary District Supervisor (You may vote for TWO)		<input type="radio"/> For <input type="radio"/> Against	
<input type="radio"/> Bob Hunter Republican <input type="radio"/> Abe Jones Democrat		<input type="radio"/> Richard K. Smith <input type="radio"/> _____ Write-in			
NC Court of Appeals Judge (You may vote for ONE)		<input type="radio"/> _____ Write-in		End of Ballot	
<input type="radio"/> Richard Dietz Republican <input type="radio"/> Vince Rozier Democrat		REFERENDA			
NC Court of Appeals Judge (You may vote for ONE)		Countywide Malt Beverage Election			
<input type="radio"/> Valerie Zachary Republican <input type="radio"/> Ricky McRoy-Mitchell Democrat		To permit the "on-premises" and "off-premises" sale of malt beverages.			
NC Superior Court Judge District 22B (You may vote for ONE)		<input type="radio"/> For <input type="radio"/> Against			
<input type="radio"/> Lori Hamilton					
<input type="radio"/> Jeffrey J. Berg		Countywide Unfortified Wine Election			
Board of Education (You may vote for THREE)		To permit the "on-premises" and "off-premises" sale of unfortified wine.			
<input type="radio"/> Nick Atkins		<input type="radio"/> For			
<input type="radio"/> Jenny Ball		<input type="radio"/> Against			
<input type="radio"/> Alan Beck					
<input type="radio"/> Kristie Bonnett					
<input type="radio"/> Mary Ann L. Brown		Countywide ABC Store Election			
<input type="radio"/> Phillip W. Craver					
<input type="radio"/> Ryan Linn Davis		To permit the operation of ABC stores.			
<input type="radio"/> Denise McLemore		<input type="radio"/> For			
<input type="radio"/> Josh M. Nifong		<input type="radio"/> Against			
<input type="radio"/> Samantha Ogle					
<input type="radio"/> _____ Write-in					
<input type="radio"/> _____ Write-in					
<input type="radio"/> _____ Write-in					
D		E	North Carolina	F	

S
A
M
P
L
E

B
A
L
L
O
T

-- VOTE BOTH SIDES --