

SAMPLE BALLOT

Sample Ballot
Davidson County, North Carolina
November 8, 2016

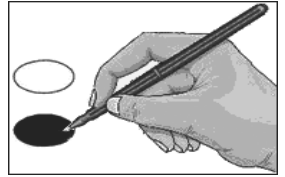


G003



BALLOT MARKING INSTRUCTIONS:

- A. With the marking device provided or a black ball point pen, completely fill in the oval to the left of each candidate or selection of your choice as shown.
 B. Where authorized, you may write in a candidate by filling in the oval and writing the name on the Write-in line.
 C. If you tear, deface or wrongly mark this ballot, return it to request a replacement.



PARTISAN OFFICES	NC Attorney General (You may vote for ONE)	NC Treasurer (You may vote for ONE)
President and Vice President of the United States (You may vote for ONE)	<input type="radio"/> Buck Newton Republican <input type="radio"/> Josh Stein Democrat	<input type="radio"/> Dale R. Folwell Republican <input type="radio"/> Dan Blue III Democrat
<input type="radio"/> Donald J. Trump Michael R. Pence Republican <input type="radio"/> Hillary Clinton Tim Kaine Democrat <input type="radio"/> Gary Johnson William Weld Libertarian <input type="radio"/> _____ Write-in	NC Auditor (You may vote for ONE)	NC State Senate District 33 (You may vote for ONE)
US Senate (You may vote for ONE)	<input type="radio"/> Chuck Stuber Republican <input type="radio"/> Beth A. Wood Democrat	<input type="radio"/> Cathy Dunn Republican <input type="radio"/> Jim Beall Graham Democrat
<input type="radio"/> Richard Burr Republican <input type="radio"/> Deborah K. Ross Democrat <input type="radio"/> Sean Haugh Libertarian	NC Commissioner of Agriculture (You may vote for ONE)	NC House of Representatives District 80 (You may vote for ONE)
<input type="radio"/> Ted Budd Republican <input type="radio"/> Bruce Davis Democrat	<input type="radio"/> Steve Troxler Republican <input type="radio"/> Walter Smith Democrat	<input type="radio"/> Sam Watford Republican
NC Governor (You may vote for ONE)	NC Commissioner of Insurance (You may vote for ONE)	Board of Commissioners (You may vote for THREE)
<input type="radio"/> Pat McCrory Republican <input type="radio"/> Roy Cooper Democrat <input type="radio"/> Lon Cecil Libertarian	<input type="radio"/> Mike Causey Republican <input type="radio"/> Wayne Goodwin Democrat	<input type="radio"/> Zak Crotts Republican <input type="radio"/> Steve Jarvis Republican <input type="radio"/> Fred D. McClure Republican
NC Lieutenant Governor (You may vote for ONE)	NC Commissioner of Labor (You may vote for ONE)	NONPARTISAN OFFICES
<input type="radio"/> Dan Forest Republican <input type="radio"/> Linda Coleman Democrat <input type="radio"/> Jacki Cole Libertarian	<input type="radio"/> Cherie Berry Republican <input type="radio"/> Charles Meeker Democrat <input type="radio"/> _____ Write-in	NC Supreme Court Associate Justice (You may vote for ONE)
	NC Secretary of State (You may vote for ONE)	<input type="radio"/> Michael R. (Mike) Morgan <input type="radio"/> Robert H. (Bob) Edmunds
	<input type="radio"/> Michael LaPaglia Republican <input type="radio"/> Elaine Marshall Democrat	NC Court of Appeals Judge (You may vote for ONE)
	NC Superintendent of Public Instruction (You may vote for ONE)	<input type="radio"/> Phil Berger, Jr. Republican <input type="radio"/> Linda Stephens Democrat
	<input type="radio"/> Mark Johnson Republican <input type="radio"/> June Atkinson Democrat	Continue voting next side

D		E		F	
NC Court of Appeals Judge (You may vote for ONE)		Soil and Water Conservation District Supervisor (You may vote for ONE)		End of Ballot	
<input type="radio"/> Hunter Murphy Republican <input type="radio"/> Margaret Eagles Democrat <input type="radio"/> Donald Ray Buie Unaffiliated		<input type="radio"/> Kevin Briggs <input type="radio"/> Dennis Clarence Loflin <input type="radio"/> _____ Write-in			
NC Court of Appeals Judge (You may vote for ONE)		REFERENDA			
<input type="radio"/> Bob Hunter Republican <input type="radio"/> Abe Jones Democrat		Countywide Malt Beverage Election			
NC Court of Appeals Judge (You may vote for ONE)					
<input type="radio"/> Richard Dietz Republican <input type="radio"/> Vince Rozier Democrat		To permit the "on-premises" and "off-premises" sale of malt beverages. <input type="radio"/> For <input type="radio"/> Against			
NC Court of Appeals Judge (You may vote for ONE)					
<input type="radio"/> Valerie Zachary Republican <input type="radio"/> Ricky McRoy-Mitchell Democrat		Countywide Unfortified Wine Election			
NC Superior Court Judge District 22B (You may vote for ONE)					
<input type="radio"/> Lori Hamilton <input type="radio"/> Jeffrey J. Berg		<input type="radio"/> For <input type="radio"/> Against			
Board of Education (You may vote for THREE)		Countywide ABC Store Election			
<input type="radio"/> Nick Atkins <input type="radio"/> Jenny Ball <input type="radio"/> Alan Beck <input type="radio"/> Kristie Bonnett <input type="radio"/> Mary Ann L. Brown <input type="radio"/> Phillip W. Craver <input type="radio"/> Ryan Linn Davis <input type="radio"/> Denise McLemore		To permit the operation of ABC stores. <input type="radio"/> For <input type="radio"/> Against			
<input type="radio"/> Josh M. Nifong <input type="radio"/> Samantha Ogle		Countywide Mixed Beverage Election			
<input type="radio"/> _____ Write-in <input type="radio"/> _____ Write-in <input type="radio"/> _____ Write-in		To permit the sale of mixed beverages in hotels, restaurants, private clubs, community theatres, and convention centers. <input type="radio"/> For <input type="radio"/> Against			
D		E	North Carolina	F	

S
A
M
P
L
E

B
A
L
L
O
T

-- VOTE BOTH SIDES --